



Coppice Row, Epping, CM16

BUTLER & STAG



**Open Day The 8th January  
2021 - By Appointment Only.**

**An attractive, semi-detached  
house located in one of  
Theydon Bois most sought  
after roads within easy reach  
of the village amenities.**



## Freehold

- Semi-Detached Family Home
- Spacious Modern Kitchen/Dining Area
- Central Village Location
- Three Bedrooms/One Bathroom
- 78' Private Rear Garden
- Close To Shops & Station

Spaciously arranged over two floors, this three bedroom property has the benefit of a lovely, low maintenance rear garden and plenty of off street parking space.

Maximising on space and light, the vendors have spared no expense in the finish and style of this glorious property with ground floor accommodation comprising wide entrance hall with built in storage, large living room with feature fireplace, cloakroom and a stunning kitchen/ diner incorporating extensive base level units, island and marble work tops.

On the first floor, in addition to the three bedrooms, there is a stylish shower room with large walk in shower.

Externally, a paved drive provides off road parking space with a side access taking you to the beautiful rear garden which is privately enclosed. This is a special feature of the property and is low maintenance with a newly laid and generous patio

Theydon Bois is a charming village with a traditional green and duck pond, well regarded primary school, a range of shops, pubs and restaurants, cricket, tennis and golf clubs. Transport links to London are excellent with the central line tube station within just over ten minutes' walk and easy access to the M25 and M11.

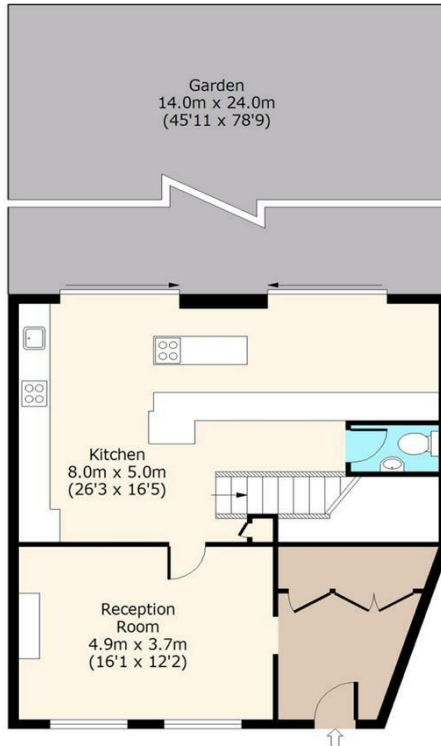




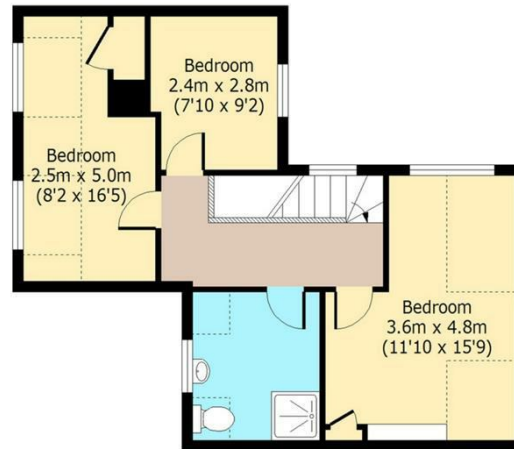
Coppice Row, CM16



**Ground Floor**  
Approx. 70 Sq. meters (752 Sq. feet)



**First Floor**  
Approx. 51 Sq. meters (552 Sq. feet)



Total area: approx. 121 Sq. meters (1304 Sq. feet)  
For illustration purposes only - not to scale  
[www.londonpropertyassessments.co.uk](http://www.londonpropertyassessments.co.uk)

IMPORTANT NOTICE - These particulars have been prepared in good faith and they are not intended to constitute part of an offer or contract. We have not performed a structural survey on this property and the services, appliances and specific fittings have not been tested. All photographs, measurements, floor plans and distances referred to are given as a guide and should not be relied upon.

**BUTLER & STAG**

☎ 01992 667666

🏠 4 Forest Drive, Theydon Bois, Essex, CM16 7EY

✉ [theydon@butlerandstag.com](mailto:theydon@butlerandstag.com)

[www.butlerandstag.uk](http://www.butlerandstag.uk)